



## MAXIM ROAD, N21 1EX



**£1,350,000 Freehold**

- DOUBLE FRONTED DETACHED BUNGALOW
- TWO ENSUITE BATHROOMS
- 20'10" RECEPTION ROOM ONTO GARDEN
- GARAGE
- 96' REAR GARDEN WITH WESTERLY ASPECT
- THREE BEDROOMS
- GUEST CLOAKROOM
- KITCHEN/DINER
- CARRIAGE DRIVEWAY
- THREE OUTBUILDINGS

## Property Details

Positioned on the sought after Maxim Road in Grange Park, this lovely double fronted detached bungalow offers a perfect blend of comfort and potential. Set on a generous plot, the property boasts ample space for extension and loft conversion if desired, subject to the necessary planning consent, making it an ideal choice for those looking to create their dream home.

Upon entering, you are greeted by a welcoming hallway that leads to a spacious reception room measuring an impressive 20'10". This inviting space features wide bifold doors that open directly onto the garden, allowing for a seamless flow between indoor and outdoor living. The modern kitchen/diner is fitted with stylish units and also provides access to the garden, making it perfect for entertaining.

The bungalow comprises three well-proportioned bedrooms, with the two larger rooms benefiting from en-suite bathrooms, and fitted wardrobes to one of them, ensuring privacy and convenience. The third bedroom is currently utilised as a study, offering flexibility for your lifestyle needs. Additionally, a guest cloakroom adds to the practicality of the layout. There is also air conditioning to all rooms.

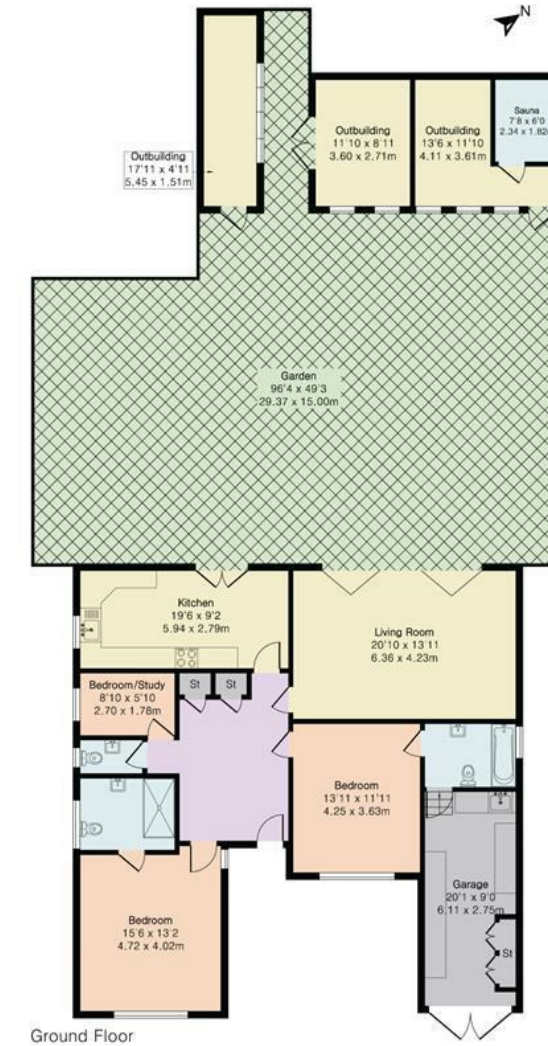
The rear garden is a true highlight, extending to an impressive 96 feet and enjoying a delightful westerly aspect, perfect for soaking up the afternoon sun. The garden is complemented by three outbuildings, one of which houses a sauna, providing a unique retreat for relaxation, another if's a workshop and then there is a useful storage shed.

To the front of the property, a carriage driveway offers ample parking space and grants access to a 20' x 9' garage/storage room, enhancing the overall functionality of this lovely home.

This detached bungalow on Maxim Road presents a wonderful opportunity for families and individuals alike, combining spacious living with the potential for future development if required in a desirable location.



Approximate Gross Internal Area 1410 sq ft - 131 sq m  
(Including Garage & Excluding Outbuilding)  
Outbuilding Area 359 sq ft - 33 sq m



Floor plan produced in accordance with RICS Property Measurement 2nd Edition. Although Pink Plan Ltd ensures the highest level of accuracy, measurements of doors, windows and rooms are approximate and no responsibility is taken for error, omission or misstatement. These plans are for representation purposes only and no guarantee is given on the total square footage of the property within this plan. The figure icon is for initial guidance only and should not be relied on as a basis of valuation.



Energy Efficiency Rating		Current	Potential
Very energy efficient - lower running costs			
(92 plus)	A		
(81-91)	B		
(69-80)	C		
(55-68)	D		
(39-54)	E		
(21-38)	F		
(1-20)	G		
Not energy efficient - higher running costs			
England & Wales		73	80
		EU Directive 2002/91/EC	

